



ALVA'S INSTITUTE OF ENGINEERING & TECHNOLOGY

Shobhavana Campus, Mijar, Moodabidri, Mangalore Taluk, D.K - 574225
Phone: 08258-262725, Fax: 08258-262726

QUALITY INDICATOR FRAMEWORK (QIF)

7.1.3 Describe the facilities in the Institution for the management of the following types of degradable and non-degradable waste.

Alva's Institute of Engineering and Technology (AIET) has keen concern on solid waste disposal and its management. The color coded Green, Blue and Yellow separate bins are provided in the appropriate places of campus to collect degradable, non-degradable and E- wastes separately. The liquid waste generated in the campus includes effluents from Hostels and Academic blocks. The said effluent is chemically treated in the specially constructed tanks, and treated water is used for gardens. For the purpose of proper management of solid waste, food waste, E- waste and sludge, AIET has established MoUs with external agencies. The blank pages of discarded note books from the are re-bounded and reused


PRINCIPAL

PRINCIPAL

Alva's Institute of Engg. & Technology
Mijar, MOODABIDRI - 574 225, D.K.

7.1.3 Describe the facilities in the institutions for the management of the following types of degradable and non-degradable waste

- Solid waste management
- Liquid waste management
- Biomedical waste management
- E- waste management
- Waste recycling system
- Hazardous chemicals and radioactive waste management

Documents Uploaded			
Sl. No.	Particulars		Page No.
1	Solid Waste Management	Geo tagged Photos of Colour Coded dustbins located in the Campus	2-3
		Geo tagged Photos of Composting system	4
2	Liquid Waste Management	Geo tagged Photos of Liquid wastemanagement system in the campus	5-6
3	Waste recycling system	Geo tagged Photos of usage of recycledwater in the Campus	7

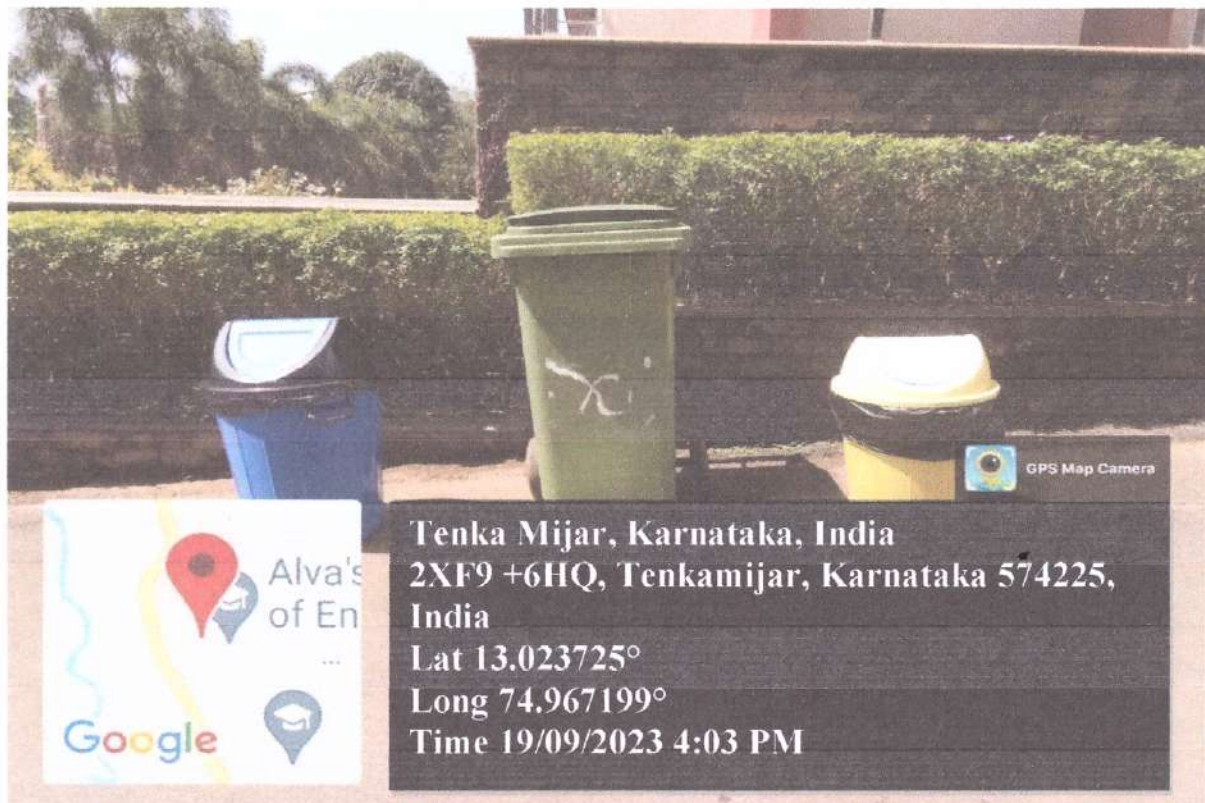


PRINCIPAL
Alva's Institute of Engg. & Technology,
Mijar, MOODBIDRI - 574 225, D.K

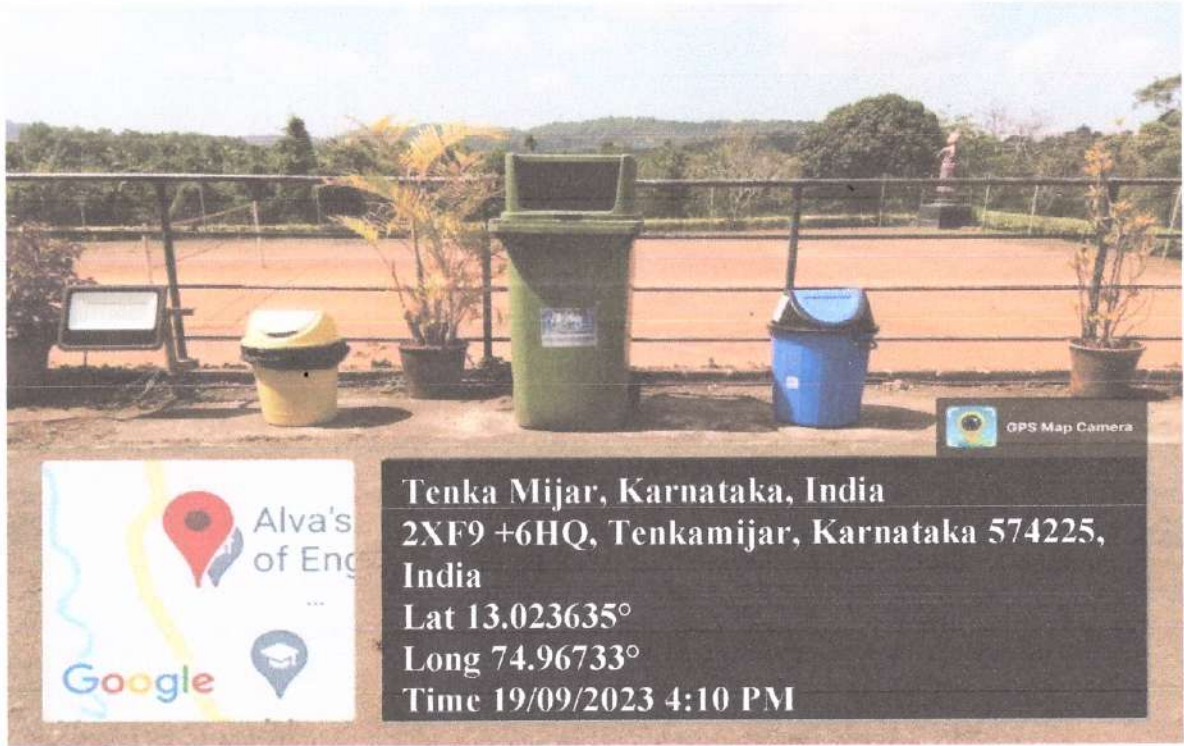
1. Solid Waste Management

Colour coded separate dustbins are kept at different locations in the campus to collect the waste.

Sl No	Description	Details
1	Type	Dust bin
2	Color	Blue, Green & Yellow
3	Capacity	110L, 50L
4	Material	HD PE
5	Eco Friendly	Yes
6	Movable	Yes



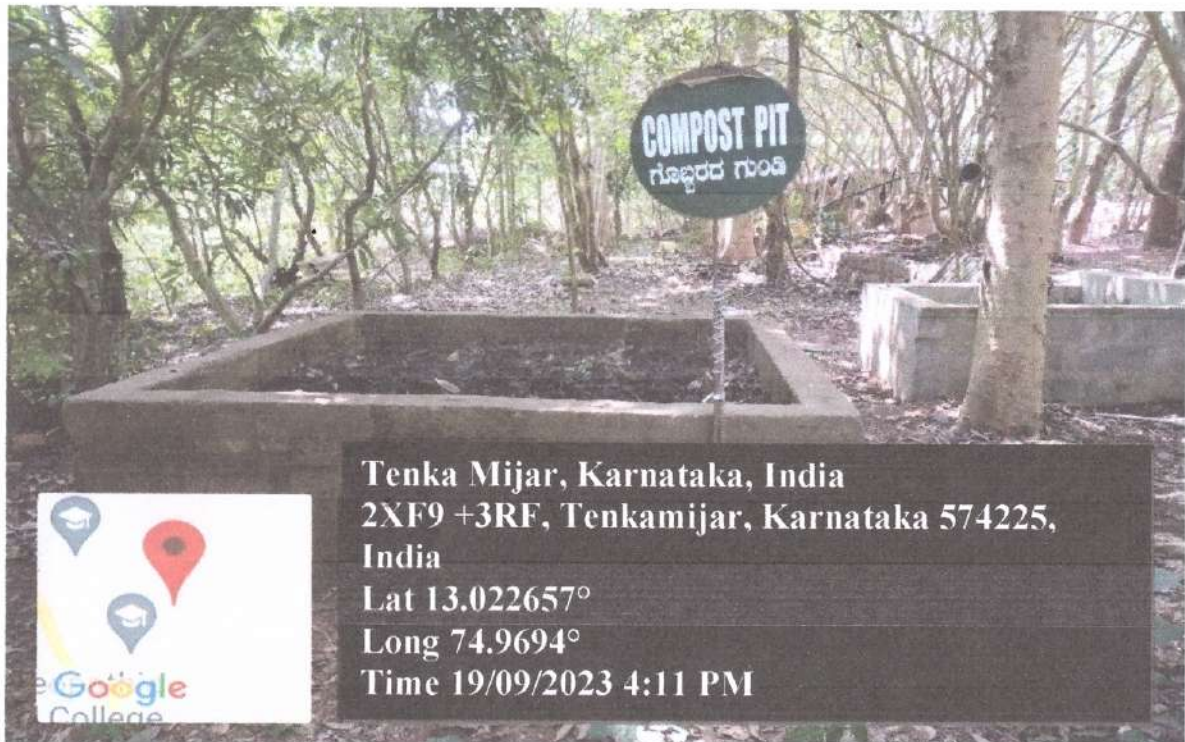
Colour coded dustbins near MBA Block



Colour coded dustbins in front of AIET Main block

Compost Pit

The leaves of plants are converted into manure by the way of composting. Compost pit are located in Shobhavana Herbal Garden of AIET.



Compost pit at Shobhavana Herbal Garden



PRINCIPAL

Alva's Institute of Engg. & Technology
Mijar, MOODBIDRI - 574 225, D.K.

2. Liquid Waste Management

The liquid wastes from individual blocks are collected in storage pit having capacity of 5 lakh liters. After treatment, the recycled water is using for cultivation area and garden.



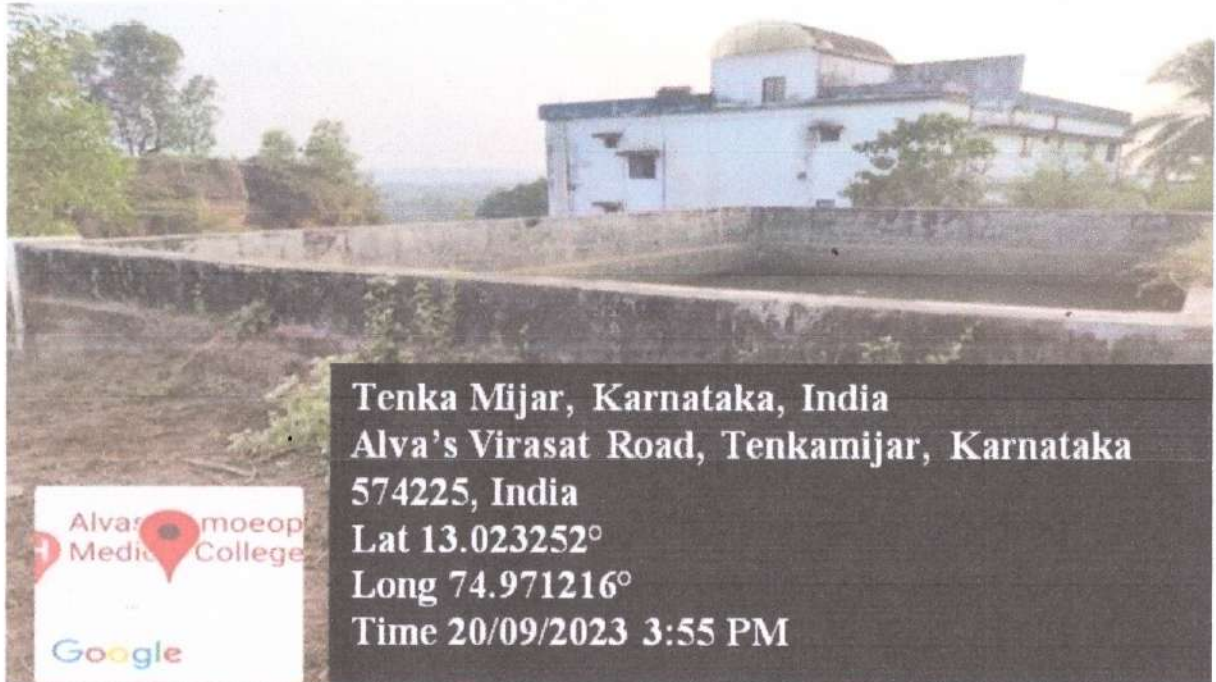
Sewage Treatment plant



Treatment Chamber of Size 3m x 2m x 1m



Filter Tank



Recycle water tank at East end of Girls Hostel of 350000 liter capacity

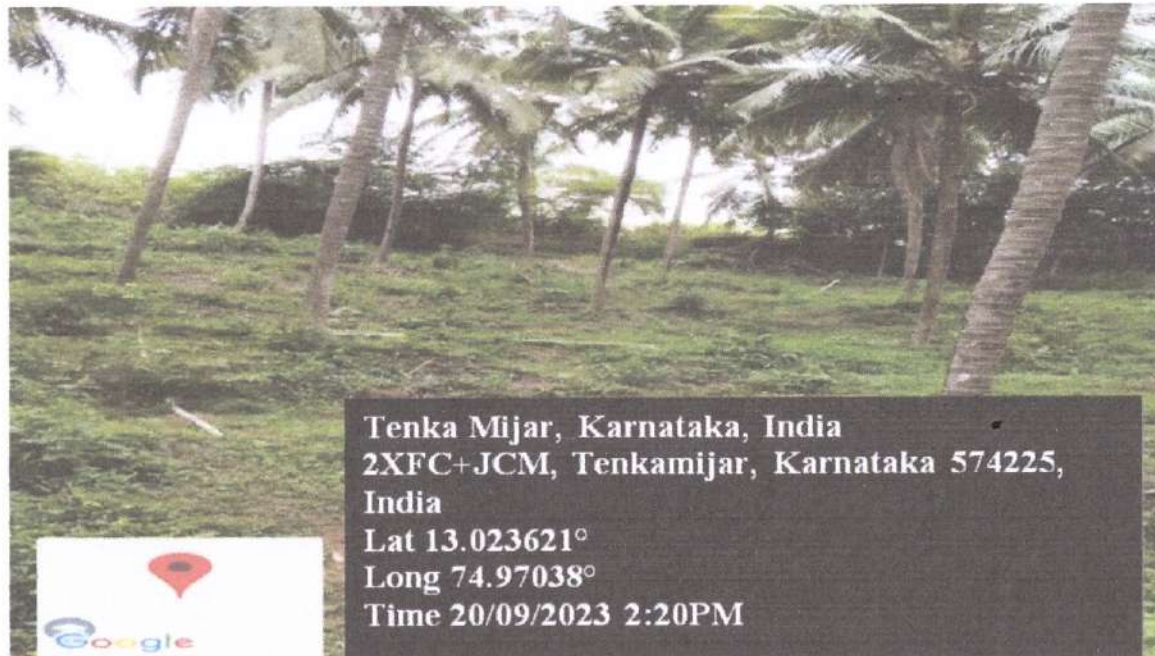


Recycle water tank of 300000 liters capacity at Shobhavana Garden

3. Waste Recycling System



Recycled water for shobhavana garden



Recycled water for Coconut farm in the campus



PRINCIPAL

Alva's Institute of Engg. & Technology,
Moodbidri - 574 225, D.K